

THE AIDS EDUCATION AND

The AETCs are a network of regional education centers that train clinical healthcare providers, provide clinical guidance and technical assistance and disseminate guidelines and best practices for the effective management of HIV infection.

The network achieves these goals by working with a select group of Regional Partner sites covering all 50 states, the District of Columbia, Puerto Rico, and 6 U.S. Pacific jurisdictions.

The AETCs provide education, training, technical assistance and educational clinical consultations utilizing various modalities including:

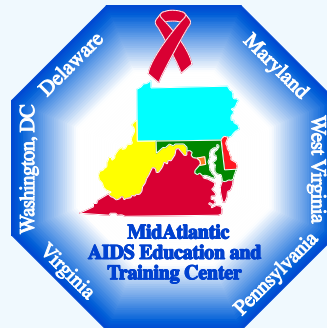
- Real-time, in-person, presentations
- Distance real-time and archived presentations
- Development of guides, posters and other instructional materials for clinicians
- Facilitation of “communities of practice”
- Development, implementation and hosting of individualized clinical preceptorships
- Development of self-study materials
- Technical assistance on topics pertaining to HIV care
- Innovative care delivery approaches and models
- Educational clinical consultation with expert clinicians (live, telephonic or web-based)

The AETCs are a program of the Health Resources and Services Administration, Bureau of HIV/AIDS Division of Training and Capacity

CONTINUING EDUCATION

Continuing education credits are available for selected offerings. Credits may include Continuing Medical Education (CME), Continuing Nurse Education (CNE), Continuing Dental Education (CDE), Continuing Pharmacy Education (CPE), Social Work Continuing Education (SWCE) and other professional educational credits.

For more information, please visit:



HRSA, HIV/AIDS Bureau

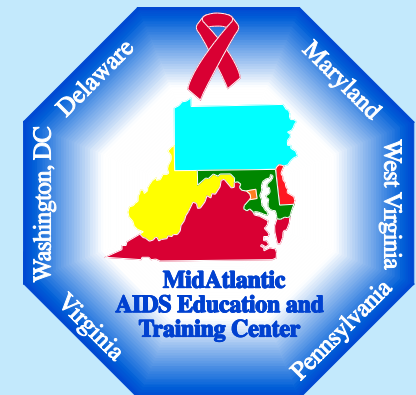
Division of Training and Capacity Development

Grant No. U1OHA29295

The University of Pittsburgh is an affirmative action, equal opportunity institution.

Center Headquarters at the
UNIVERSITY OF PITTS-

Interprofessional Education Project



INTERPROFESSIONAL EDUCATION

Mission

Students and practicing clinicians must develop sustainable practice change to work interprofessionally to assure that care is provided in a manner that reduces costs, optimizes individual health competencies and allows HIV practitioners to function within their full scope.

The goal of the MAAETC IPEC will be to assist in preparing new and current health and service-delivery professionals across disciplines to improve patient and population health outcomes, to increase the size and strength of the HIV clinical workforce in our region and to improve outcomes through both didactic and service learning opportunities.

Region Wide Objectives

- Develop and enhance faculty's ability to teach and train utilizing the core competencies of IPE
- Increase the HIV workforce by training students in the schools of medicine, law, nursing, social work, pharmacy and dentistry in HIV fundamentals and the importance of routine testing
- Provide an opportunity for students to elect into an advance HIV clinical competency coursework
- Follow students who go into HIV Specialty Care

Components in Year 1-2 at UMB

A broad campus wide HIV fundamentals and routine screening learning opportunities in the 6 graduate schools as well as an advanced clinical components at the University of Maryland. This program utilizes both the academic and community partnerships—service learning is equally as valued as didactic learning.

Major Activities in Year 1-2 at UMB

HIV coursework is offered through discipline specific content followed by our IPE program, Preparing the Future, elective coursework. This is augmented by an

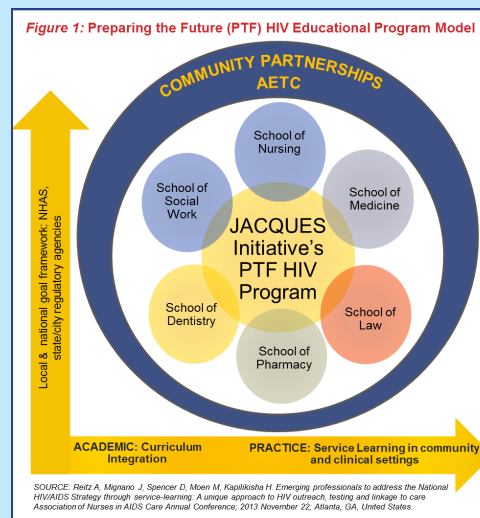
advanced clinical course for Medicine, Nursing and Pharmacy students.

Dissemination

The MAAETC has a three pong approach to dissemination:

1. We will utilize the programs at PITT, JHU, VCU, WVU and Howard to offer regional IPE programs in years 2-4.
2. We will continue to incorporate Interprofessional Education and Practice into all work we do including Practice Transformation in years 1-4.
3. We will disseminate the findings and use the PTF program as a model.

A team of UCSF researchers published a study in *PLOS-ONE* that shows team-based, interdisciplinary models of health care reduce costs and improve quality of life in patients with more complex medical needs. Using a combination of integrated treatment plans and comprehensive in-home assessment, the researchers found a decline in hospital visits among the patients studied. They believe integrated care delivery models and home-based assessments will become more common in the future.



PROGRAM LOCATIONS

REGIONAL PARTNERS AND PRACTICE LOCATIONS:

DELAWARE

Christiana Care Health Services, Wilmington Hospital
1400 N. Washington St.
Wilmington, DE 19801
302-320-1404

DISTRICT OF COLUMBIA

Howard University, College of Pharmacy
600 W Street NW · Suite 114
Washington, DC 20059
202-806-0220

MARYLAND

Johns Hopkins University, School of Nursing
525 N. Wolfe St. · Room 524
Baltimore, MD 21201
443-287-4779

University of Maryland, Institute of Human Virology
22 South Greene St. · Box 175
Baltimore, MD 21201
410-328-2436
Dental: 410-706-7628

PENNSYLVANIA

Health Federation of Philadelphia
1211 Chestnut St. · Seventh Floor
Philadelphia, PA 19107
215-557-2101

University of Pittsburgh, Graduate School of Public Health
A427 Crabtree Hall · 130 DeSoto St.
Pittsburgh, PA 15261
412-624-1895

VIRGINIA

Inova Health System, Inova Juniper Program
2740 Prosperity Ave. · Suite 200
FairFax, VA 22031
703-321-2600

Virginia Commonwealth University, HIV/AIDS Center
1200 E. Broad St.
West Hospital 3rd Fl. East · Rm 3-222
Richmond, VA 23298
804-828-2447

WEST VIRGINIA

West Virginia University, Department of Medicine
P.O. Box 9163
Morgantown, WV 26506-9163